

1 检查组件 Checking the components

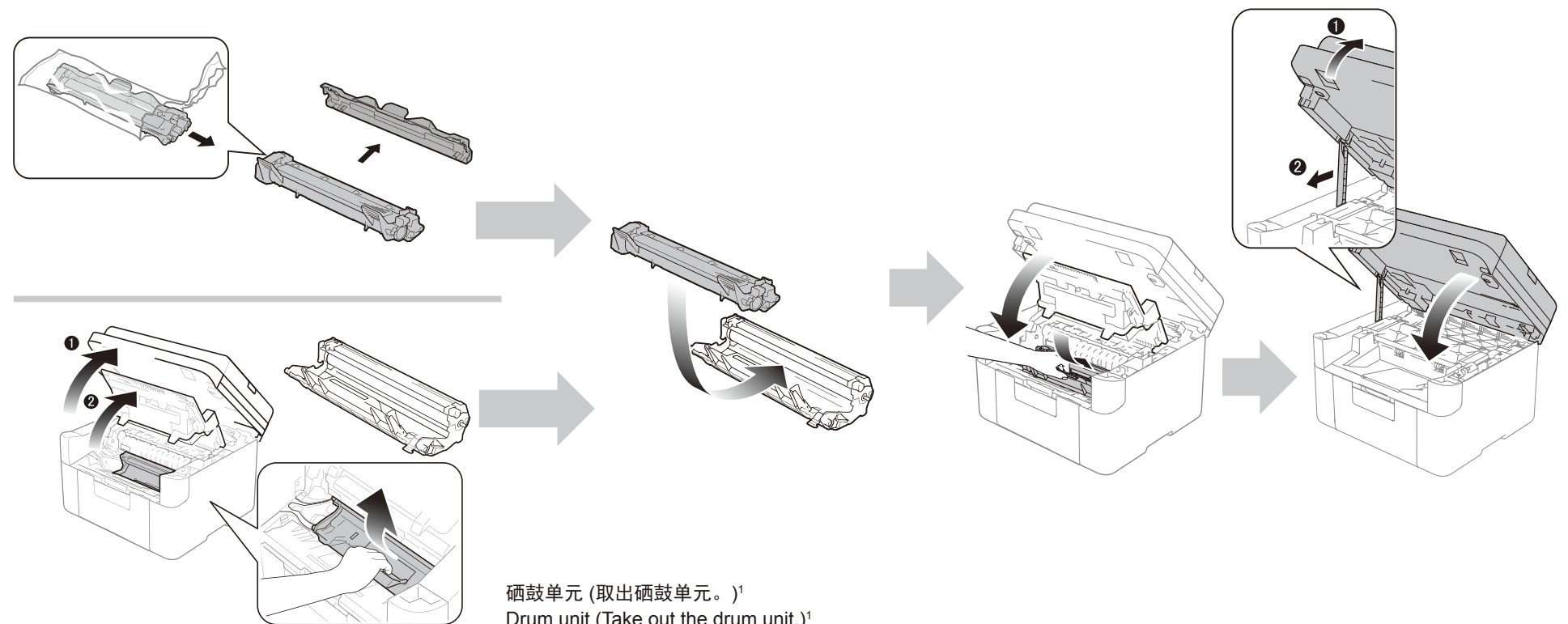


为安全起见，请先阅读产品安全手册。
Please read the Product Safety Guide first for your safety.

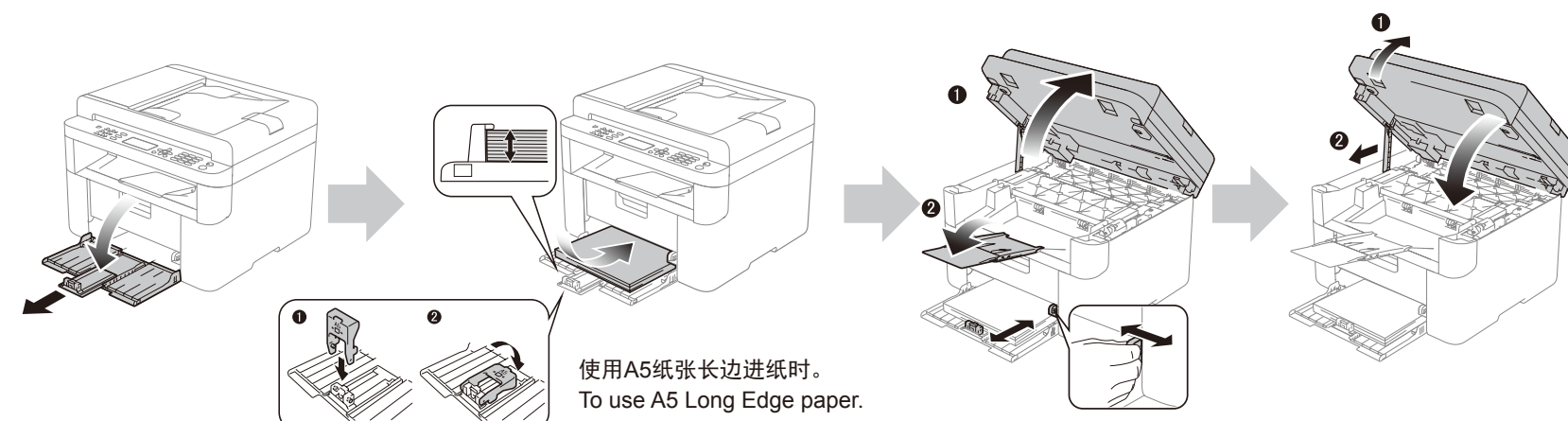
2 安装硒鼓单元和墨粉盒 / Installing the drum and toner

提示：
拆下保护盖前请左右轻摇墨粉盒数次，使墨粉盒内部的墨粉均匀分布。

NOTE:
Before pull off the protective cover, please gently shake the cartridge from side to side several times to spread the toner evenly inside the cartridge.

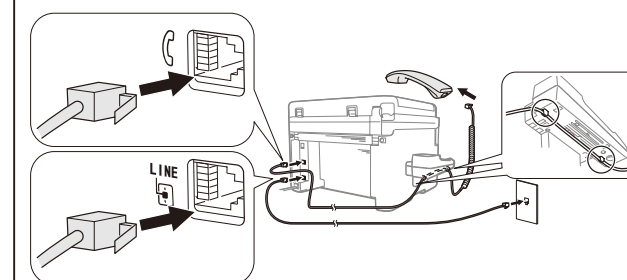


3 装入纸张 / Loading paper

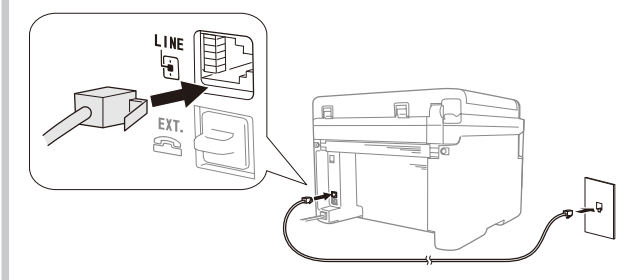


4 安装听筒和连接电话线 Connecting the cables

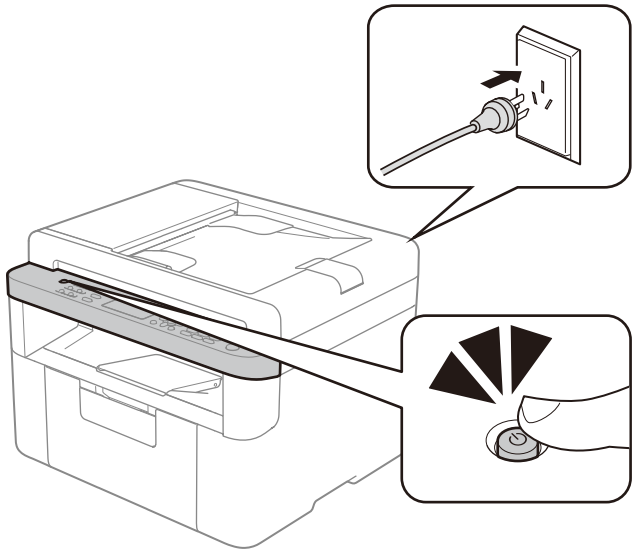
(M7256HF)



(M7255F)



5 设置国家(设备默认语言为中文) / Setting your country (The machine shows Chinese as default)



初始化时，可能需要设置您所在的国家 (具体取决于产品型号)。
如有需要，请遵循屏幕提示完成设置。
At initialization, you may be required to set your country (depending on your product).
If required, follow the on-screen instructions.

若要使用菜单键设置语言 (如有需要) 和任何其他设置或信息
To set your language using the menu keys (if needed) and any other settings or information



6 安装完整的驱动程序和软件包 (多功能套装软件) / Installing full driver and software package (Lenovo Software Suite)

Windows®



请遵循屏幕提示完成安装。
Please follow the on-screen instructions to complete the setup.

(仅适用于 Windows® 8)
使用 Adobe® Reader® 打开随机光盘上的 PDF 说明书。
如果安装了 Adobe® Reader® 却无法打开 PDF 文件，请在控制面板中将 “.pdf” 文件关联更改为 “Adobe® Reader®”。

(For Windows® 8 only)
Use Adobe® Reader® to open the PDF manuals on the CD-ROM.
If Adobe® Reader® is installed but you cannot open the files, change the “.pdf” file association to “Adobe® Reader®” from the control panel.

Macintosh

您可以登录 Lenovo 网站免费下载最新设备驱动程序，以便您使用Lenovo设备。请访问以下网站：<http://www.lenovo.com/>。
You can download the latest device driver for free from the Lenovo Website, enabling you to use your Lenovo machine as a printer. Visit us at <http://www.lenovo.com/>.